

Full Colour Multi Function Printer

RICOH
imagine. change.

RICOH
IM C2000 / C2000LT
IM C2500 / C2500LT

Copier Printer Facsimile Scanner



Take advantage of technology that scales and flexes as your business needs do. Be more productive and efficient with the RICOH IM C2000 / C2000LT / C2500 / C2500LT range of A3 colour devices.

Access a range of productivity features and upgrades - such as scanning directly to your email or dedicated folders on your network and ensure you have the latest security enhancements and mobile device connectivity options. Our intelligent devices are designed to do more as and when our business needs to, using technology that is scalable, secure, sustainable and simple.

Take advantage of:

- Print speeds of 20 – 25 ppm
- Easy-to-use 10.1" Smart Operation Panel with intuitive menu
- Mobile connectivity options – including NFC, AirPrint® or Mopria®
- Increased uptime and performance – with RICOH Intelligent Support



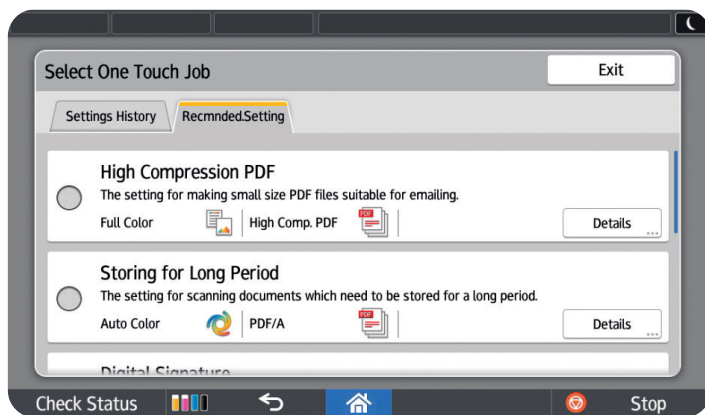
Ricoh
Outstanding Achievement in Innovation for
Ricoh Intelligent Scanning

*Awards are applicable to RICOH IM C2000 / C2500 only

Get more from your Intelligent Devices

Stellar Performance

RICOH Intelligent Devices remain current and relevant no matter what your workplace requires. This way, you have ready and easy access to new functionality, when needed. Environmentally-friendly low TEC (Typical Electricity Consumption) values, deliver reduced energy consumption and cut running costs. While RICOH Intelligent Support features such as Predictive Maintenance mean that device performance is monitored and any fixes resolved swiftly, minimising impact on your workplace.

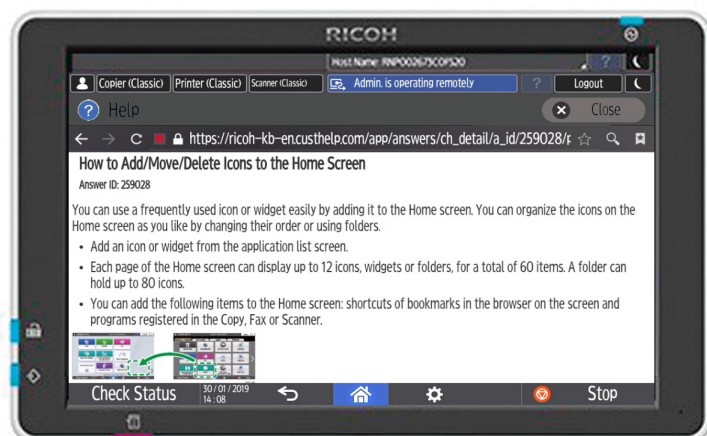


Work-flow Efficiency

You can tailor settings for individual users for quick access to apps which are used more often. The new small sized paper scanning units allow you to scan smaller documents much more conveniently, and the expanded paper tray capacity allows you to work more efficiently. Automatic firmware upgrades ensure that your devices are at maximum security so you can have peace of mind.

Smart Operation Panel

Our range of intelligent devices come fitted with a 10.1" Smart Operation Panel designed to enhance your productivity and mobility. Experience a user interface that offers fast and simple navigation with the ability to customise the layout to best suit your needs - even by adding your own company branding. Access device features, move between jobs and tasks quickly and conveniently enabling teams to work smarter.



Ease of Use

Quick access to Web Help Tools via RICOH Intelligent Support help customers to complete simple tasks like toner replacement quickly and easily. Our consistent user interface across your Ricoh fleet provides an optimal and familiar experience everywhere and anywhere. Other than RICOH native applications in our intelligent devices, we have also collaborated with third party solutions to optimize your document management workflow.

RICOH IM C2000 / C2000LT / C2500 / C2500LT

MAIN SPECIFICATIONS

MODEL	RICOH IM C2000 / C2000LT	RICOH IM C2500 / C2500LT
GENERAL		
Warm-up Time	21 Seconds	
First Output Speed : B/W	5.1 Seconds	
First Output Speed : Full Color	7.4 Seconds	
Continuous Output Speed	20ppm	25ppm
Memory Std/Max	2GB Std / 4GB Max	
HDD Std/Max	320GB Std/Max	
ARDF Capacity	100 Sheets	
SPDF Capacity	220 Sheets	
Weight [Mainframe]	Less than 82.5 kg	
Dimensions W x D x H [Standard]	587 x 685 x 788 mm	
Dimensions W x D x H [Maximum] (excluding ARDF/SPDF)	668 x 738 x 1030 mm	
Power Source	220 - 240V 50/60Hz	
COPIER		
Multiple Copying	Up to 999 Copies	
Resolution	600 dpi	
Zoom	From 25% to 400% in 1% Step	
PRINTER		
CPU	Intel Atom Processor ApolloLake 1.3GHz / 1.1GHz	
Printer Language : Standard	PCL5c, PCL6, Postscript 3 (emulation), PDF direct (emulation)	
Printer Language : Option	Genuine Adobe® Postscript®3™, XPS, IPDS, PictBridge, PDF Direct from Adobe®	
Print Resolution	1,200 x 1,200 dpi	
Network Interface : Standard	Ethernet 10 base-T/100base-TX/1000 base-T, USB Host I/F Type A, USB Device I/F Type B	
Network Interface : Option	Bi-directional IEEE 1284/ECP, Wireless LAN (IEEE 802.11a/b/g/n), Additional NIC (2nd port)	
Mobile Printing Capability	Apple AirPrint®, Mopria®, NFC, Ricoh Smart Device Connector	
Windows® environments	Windows® 7, Windows® 8.1, Windows®10, Windows® Server 2008, Windows® Server 2008R2, Windows® Server 2012R2, Windows® Server 2016	
Mac OS environments	Macintosh OS X10.11 or Later	
UNIX environments	UNIX Sun® Solaris, HP-UX, SCO OpenServer, RedHat® Linux Enterprise, IBM® AIX	
SAP® environments	SAP® S/4®	
Other Supported environments	IBM iSeries	
SCANNER		
Scanning Speed	120ipm (Simplex) / 240ipm (duplex)	
Resolution : Maximum	1,200 dpi (via TWAIN)	
Compression Method	TIFF (MH, MR, MMR, JBIG2), Grayscale	
File Formats	Single Page TIFF, Single page JPEG, Single Page High compression PDF, Single page PDF-A, Multi page TIFF, Multi page PDF, Multi page High compression PDF, Multi Page PDF-A	
Scan Modes	Email, Folder, USB, SD Card	
FACSIMILE		
Circuit	PSTN, PBX	
Transmission Speed	2 Seconds	
Modem Speed : Maximum	33.6 Kbps	
Resolution : Standard	8 x 3.65 line/mm, 200 x 100 dpi	
Resolution : Option	16 x 15.4 line/mm, 400 x 400 dpi	
Compression Method	MH, MR, MMR, JBIG	
Memory : Standard	4MB (320 Pages)	
Memory : Maximum	60MB (4,800 Pages)	
PAPER HANDLING		
Recommended Paper Size	SRA3, A3, A4, A5, A6, B4, B5, B6	
Paper Input Capacity Std	1,200 Sheets	
Paper Input Capacity Max	2,300 Sheets	
Paper Output Capacity Std	500 Sheets	
Paper Output Capacity Max	1,625 Sheets	
Paper Weight	60 - 300g/m ²	
Paper Types	Plain paper, Recycle paper, Special paper, Color paper, Letterhead, Cardstock, Preprinted paper, Bond paper, Coated paper, Envelope, Gloss paper, Label paper, OHP	
ECOLOGY		
Power Consumption : Max	Less Than 1,700 W	
Power Consumption : Ready	46.2 W	
Power Consumption : Sleep	0.55 W	
TEC Value	0.7kWh	0.9kWh

RICOH IM C2000 / C2000LT / C2500 / C2500LT

MAIN SPECIFICATIONS

MODEL	RICOH IM C2000 / C2000LT	RICOH IM C2500 / C2500LT
INPUT / OUTPUT TRAY AND FINISHER OPTIONS		
1 x 550-Sheets Paper Tray (PB 3270)	Paper Size : A6-SRA3, Paper Weight : 60-300g/m ²	
2 x 550-Sheets Paper Tray (PB 3300)	Paper Size : A6-SRA3, Paper Weight : 60-300g/m ²	
1,000-Sheet Booklet Finisher (SR3270)	Paper Size : Proof Tray :A6-A3, Shift Tray : A6-A3, Booklet tray : A4-A3 Paper weight : 60-300g/m ² Staple paper size : A4-A3, Staple paper weight :52-105g/m Staple position : Top, Bottom, 2 Staples, Booklet Staple capacity Max : 50 sheets (A4) 30 Sheets (A3)	
500-Sheet Internal Finisher (SR3250)	Paper Size : A6-A3, Paper weight : 60-300g/m ² Staple paper size : A4-A3, Staple paper weight :52-105g/m Staple position : Top, Bottom, 2 Staples Staple capacity Max : 50 sheets (A4) 30 Sheets (A3)	
250-Sheet Internal Finisher (SR3300)	Paper Size : A6-A3, Paper weight : 60-300g/m ² Staple paper size : A4-A3, Staple paper weight :52-105g/m Staple position : Top,1 Staple Staple capacity Max : 2-5 sheets (A4)	
Internal Shift Tray (SH3080)	Tray Capacity : 250 sheets, Paper size : 320 mm x 600 mm or smaller, Paper weight : 60-300g/m ²	
One-bin tray (BN3130)	Tray Capacity : 125 sheets, Paper size : A5 - A3, Paper weight : 52-300g/m ²	
OTHER OPTIONS		
Platen Cover PN2000, DF3110, DF3120, Fax Option Type M37, G3 Interface Unit Type M37, Fax Connection unit Type M37, FAX Memory unit Type M19 64MB, Memory Unit Type M37 4GB, Caster Table Type M3, VM Card Type M37, Side Tray, Punch Unit NAVEU/SC (PU3070,PU3080), Camera direct print card, Postscript3 Unit Type M37, XPS direct print Option Type M37, IEEE 1284 I/F Type M19, IEEE 802.11a/g/n I/F Type M19, Device server option Type M37, File format Converter Type M19, OCR Unit Type M13, Small Paper Feeding Unit Type M37, Page Keeper Type M37, ADF Handle, External Keyboard Bracket Type M19, Optional Counter Interface Unit Type M12, Key Counter Bracket Type M3, NFC Card Reader Type M37, Smart Card Reader Built in Unit Type M37, External USB Keyboard (No bracket), Unicode Font Package for SAP®License.		

RICOH
imagine. change.

www.ricoh-ap.com

RICOH ASIA PACIFIC PTE LTD

30 Cecil Street, #13-01/08 Prudential Tower, Singapore 049712
Phone: +65 6830 5888, Fax: +65 6830 5830

All brand and/or product names are trademarks of their respective owners. Specifications and external appearance are subject to change without notice. The colour of the actual product may vary from the colour shown in the brochure. The images in this brochure are not real photographs and slight differences in detail might appear. Copyright © 2022 Ricoh Asia Pacific Pte Ltd. All rights reserved. This brochure, its contents and/or layout may not be modified and/or adapted, copied in part or in whole and/or incorporated into other works without the prior written permission of Ricoh Asia Pacific Pte Ltd.



RICOH @Remote

