

Assessment & Cost Recovery Solution

# RICOH Device Manager NX Accounting

**RICOH**  
imagine. change.



## A Smarter Way to Track Efficiency

The customizable RICOH Device Manager NX Accounting software solution helps put you on the fast track toward cost savings. This easy-to-use utility offers comprehensive administrative tools to perform essential billing and reporting tasks—including accurate charge backs—from the convenience of your desktop. It can be installed quickly on a standard PC and works with both networked Ricoh and third-party devices. Additionally, it leverages advanced capabilities found only in the latest generation devices based on Ricoh's services-led platform. Use it to allocate resources more effectively and to manage your document output fleet more economically.

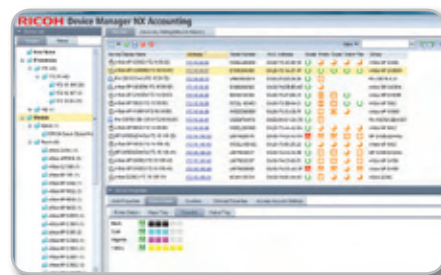
### Measure costs accurately

Use Ricoh Device Manager NX Accounting to create multiple customized administrative and end-user reports to capture print, copy, scan and fax usage for Ricoh devices across the network. Automate tracking and billing with the Scheduler feature—right down to individual users or departments—to improve cost savings by identifying wasteful printing.

Department	User Code	User Name	Color Pages	Color Cost
Marketing	User 005	User 005	527	38.39
	User 011	User 011	475	35.05
	User 012	User 012	95	7.00
	User 024	User 024	801	120.64
	User 034	User 034	314	209.51
Accounting	User 020	User 020	1815	145.20
	User 211	User 211	95	7.17
	User 212	User 212	112	22.54
	User 214	User 214	51	4.34
	User 223	User 223	45	4.60
Sales	User 017	User 017	234	18.12
	User 036	User 036	54	4.17
	User 021	User 021	11	0.88
	User 022	User 022	976	40.18
	User 023	User 023	64	5.28
	User 025	User 025	74	5.83
	User 026	User 026	521	35.49

### Monitor your networked devices proactively

Early detection can prevent a lot of problems. Administrators can use Ricoh Device Manager NX Accounting to proactively monitor a wide range of device properties such as consumable levels, paper supplies and service conditions in order to quickly troubleshoot issues and minimize downtime. Take advantage of easy-to-use, drag-and-drop display columns to personalize device monitoring and management tasks to fit your unique requirements.



### Manage devices centrally

Take advantage of centralized controls and an intuitive, user-friendly interface to simplify device management on services-led platform Ricoh devices. Manage individual device features such as paper types, transition to energy saving mode and even network settings right from your desktop. Clone settings and features on one device and assign them to another device—or group of devices—for fast, convenient configurations and installations. Set and control user privileges to restrict access to specific functions and curb excessive or unauthorized usage.

### Automate fleet management

Optimize fleet efficiency. Check status and activity for up to 250 Ricoh and non-Ricoh devices in your network fleet right from the desktop. Set and implement standardized policies across the entire fleet to streamline administrative tasks and create a consistent, reliable device management strategy. You can even categorize groups of devices using manual, dynamic or automatic grouping to quickly help you find exactly what you need.

## Specifications

### System Requirements

Minimum:	CPU: Intel® Core™ 2 Duo Processor 1.6 GHz or higher RAM: 1.0 GB HDD: 1.2 GB free space
Client Operating System:	Windows® XP Home/Professional SP3 and later (32bit) Windows® Vista Home Premium/Business/Enterprise/Ultimate SP2 and later (32bit) Windows® 7 Home Premium/Professional/Enterprise/Ultimate SP1 and later (32bit/64bit) Windows® 8/Pro/Enterprise (32bit/64bit)
Database:	Apache Derby DB included
Protocols:	SNMP v1/v2/v3 HTTP HTTPS (client only) DNS FTP/SFTP LDAP (Type R only) Hash: SHA-256 and higher Symmetrical algorithm: RSA2048 and higher Asymmetrical algorithm: AES256 and higher
Security:	Not supported
Virtualization:	Not supported
Supported Devices:	General Support: <ul style="list-style-type: none"> <li>• Networked Ricoh MFP and Laser Printers introduced in 2005 and later</li> <li>• Networked Ricoh GELJET™, GDI and SMART controller devices</li> <li>• Networked standard MIB devices</li> </ul> Enhanced Support: Services-led platform networked Ricoh devices introduced in 2012 and later User Accounting Support: Ricoh Family Group MFP and Laser Printers introduced in 2005 and later which support User Authentication

**RICOH**  
imagine. change.

[www.ricoh-ap.com](http://www.ricoh-ap.com)

RICOH ASIA PACIFIC PTE LTD  
103 Penang Road #08-01/07, VISIONCREST Commercial, Singapore 238467  
Phone: +65 6830 5888, Fax: +65 6830 5830